

Dear Families,

Welcome back to all our returning families and welcome to all the new families who have started school this week. The children have settled in exceptionally well after the long summer break! They have loved reconnecting with their friends and are also beginning to form new friendships.



Throughout the week children have really enjoyed exploring outside. They have been challenging themselves on the climbing equipment and playing group chasing games such as 'hide and seek'.

Early Years Foundation Stage (EYFS)

The revised curriculum became statutory in September 2021. It includes seven areas as follows:

Prime areas

- Communication and Language
- Physical Development
- Personal, Social and Emotional Development

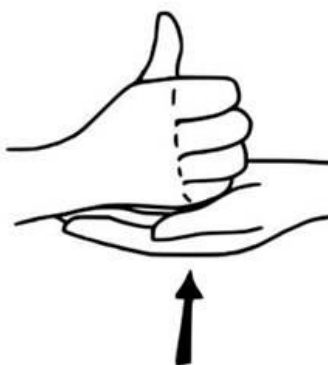
Specific areas

- Literacy
- Mathematics
- Understanding The World
- Expressive Arts and Design

Children develop and learn in different ways and at different rates and all areas of learning and development are equally important and inter-connected. Within this framework we develop learning experiences which allow children to build their own experiences and interests.

The nursery create a plan for each term which identifies possible learning based on seasonal events, festivals and things significant for the children e.g. 'starting school'. The 'parents planning sheet' will be available in the school reception area at the end of next week.

Makaton Sign of the week



Help

<https://www.youtube.com/watch?v=yAvkHt9mlT4>



Important Dates

School will be closed for staff training on the following dates:

Monday 19th September (bank holiday)
Monday 31st October
Tuesday 3rd January
Monday 5th June



Urgent mental health support 24/7 crisis lines. Text 'SHOUT' to 85258 or call 0800 028 8000.

Clothing

Please make sure all your child's clothing, shoes, hats and bag are clearly labelled.

Medication

Only prescribed medicines can be administered at school. Please notify staff if your child has medication. Medicine including creams must not be left in children's bags.

Snacks

Please do not leave food or drinks in your child's bag. This is a serious health hazard for children with allergies.

If you are concerned about a child's wellbeing or have a question about safeguarding please contact Kellie Schrader, Deputy Headteacher. Outside of school hours please contact Wandsworth MASH: 020 8871 6622
mash@wandsworth.gov.uk